

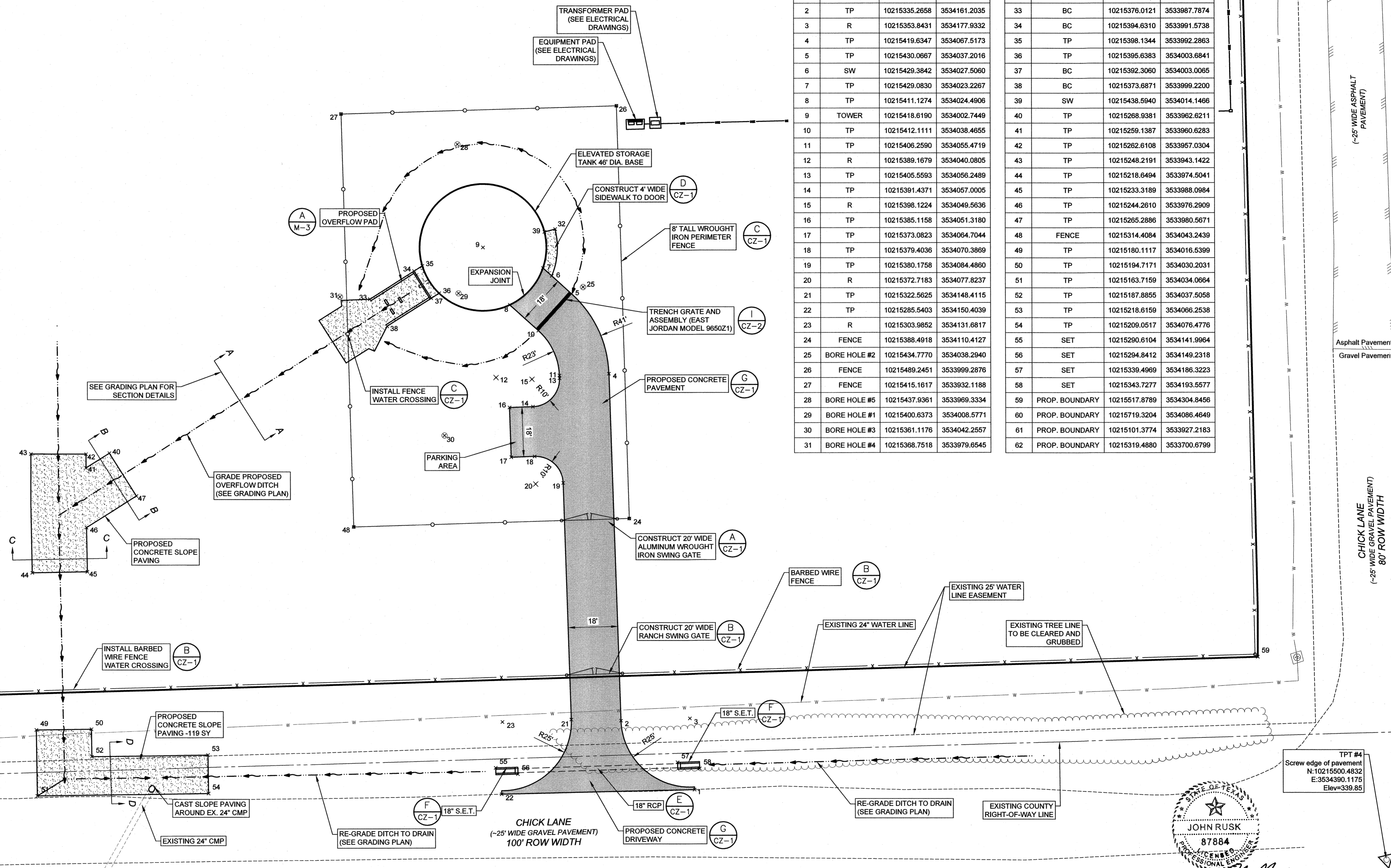
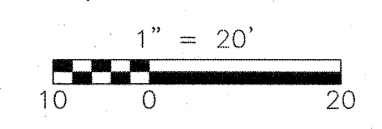
© 2022 CDM SMITH. ALL RIGHTS RESERVED. THESE DOCUMENTS AND DESIGNS PROVIDED BY PROFESSIONAL SERVICE, INCORPORATED HEREIN, ARE THE PROPERTY OF CDM SMITH AND ARE NOT TO BE USED, IN WHOLE OR PART, FOR ANY OTHER PROJECT WITHOUT THE WRITTEN AUTHORIZATION OF CDM SMITH.

SURVEY NOTES:

- BEARINGS ARE BASED ON NAD83, TEXAS STATE PLANE COORDINATE SYSTEM, CENTRAL ZONE (EPOCH 2010) GRID COORDINATES ON GPS#1 AND GPS#2 COLLECTED BY STATIC GPS METHODS AND PROCESSED THROUGH NGS-OPUS. THE PROJECT COMBINED SCALE FACTOR OF 1.000110017 WAS NOT APPLIED AND ALL DISTANCES AND COORDINATES ARE GRID.
- ELEVATIONS ARE BASED ON THE NAVD88 ELEVATION OF 342.05 FEET ON CITY OF BRYAN MONUMENT GPS-104 AND A CONVENTIONAL LEVEL LOOP RAN THROUGH ALL CONTROL POINTS.
- ACCORDING TO FEMA FLOOD INSURANCE RATE MAP NO. 48041C095 E WITH A REVISION DATE OF MAY 16, 2012 THE PROPERTY LIES IN AN AREA OUTSIDE THE 0.2% ANNUAL CHANCE OF FLOODPLAIN DESIGNATED AS ZONE "X".
- THIS IS NOT A BOUNDARY SURVEY ALL BEARINGS, DISTANCES AND LEGAL DOCUMENTS SHOWN HEREON ARE FOR INFORMATION ONLY. BOUNDARY LOCATIONS ARE APPROXIMATE.
- APPROXIMATE LOCATIONS OF UNDERGROUND UTILITIES ARE SHOWN AS MARKED BY TEXAS 811 LOCATE REQUEST NUMBER 2180827781 OR BY CONNECTING SURFACE FEATURES LOCATED DURING THE FIELD SURVEY.
- LEGAL DESCRIPTION:**
LOT 50 IN BLOCK 21
EDGEWATER SUBDIVISION - PHASE 3
- ZONING DESCRIPTION:**
PLANNED DEVELOPMENT - HOUSING DISTRICT (PD-H)
- WHERE ELECTRIC FACILITIES ARE INSTALLED, BTU HAS THE RIGHT TO INSTALL, OPERATE, RELOCATE, CONSTRUCT, RECONSTRUCT, ADD TO, MAINTAIN, INSPECT, PATROL, ENLARGE, REPAIR, REMOVE AND REPLACE SAID FACILITIES UPON, OVER, UNDER, AND ACROSS THE PROPERTY INCLUDED IN THE PUE, AND THE OF INGRESS AND EGRESS ON PROPERTY ADJACENT TO THE PUE TO ACCESS ELECTRIC FACILITIES. BTU WILL REPAIR ANY DAMAGE ASSOCIATED WITH ACCESSING THE SITE.

TBM#5285
1/2" Iron Rod
N:10215388.7223
E:3533767.3363
Elev=341.47

TBM#5092
1/2" Iron Rod
(Capped 6200)
N:10215719.3166
E:3534086.4643
Elev=344.26



COORDINATES			
NUM.	DESCRIPTION	NORTHING	EASTING
1	TP	10215337.0757	3534197.7928
2	TP	10215335.2658	3534161.2035
3	R	10215353.8431	3534177.9332
4	TP	10215419.6347	3534067.5173
5	TP	10215430.0667	3534037.2016
6	SW	10215429.3842	3534027.5060
7	TP	10215429.0830	3534023.2267
8	TP	10215411.1274	3534024.4906
9	TOWER	10215418.6190	3534002.7449
10	TP	10215412.1111	3534038.4655
11	TP	10215406.2590	3534055.4719
12	R	10215389.1679	3534040.0805
13	TP	10215405.5593	3534056.2489
14	TP	10215391.4371	3534057.0005
15	R	10215398.1224	3534049.5636
16	TP	10215385.1158	3534051.3180
17	TP	10215373.0823	3534064.7044
18	TP	10215379.4036	3534070.3869
19	TP	10215380.1758	3534084.4860
20	R	10215372.7183	3534077.8237
21	TP	10215322.5625	3534148.4115
22	TP	10215285.5403	3534150.4039
23	R	10215303.9852	3534131.6817
24	FENCE	10215388.4918	3534110.4127
25	BORE HOLE #2	10215434.7770	3534038.2940
26	FENCE	10215489.2451	3533999.2876
27	FENCE	10215415.1617	3533932.1188
28	BORE HOLE #5	10215437.9361	3533969.3334
29	BORE HOLE #1	10215400.6373	3534008.5771
30	BORE HOLE #3	10215361.1176	3534042.2557
31	BORE HOLE #4	10215368.7518	3533979.6545

COORDINATES			
NUM.	DESCRIPTION	NORTHING	EASTING
32	SW	10215442.0679	3534016.1296
33	BC	10215376.0121	3533987.7874
34	BC	10215394.6310	3533991.5738
35	TP	10215398.1344	3533992.2863
36	TP	10215395.6383	3534003.6841
37	BC	10215392.3060	3534003.0065
38	BC	10215373.6871	3533999.2200
39	SW	10215438.5940	3534014.1466
40	TP	10215268.9381	3533962.6211
41	TP	10215259.1387	3533960.6283
42	TP	10215262.6108	3533957.0304
43	TP	10215248.2191	3533943.1422
44	TP	10215218.6494	3533974.5041
45	TP	10215233.3189	3533988.0984
46	TP	10215244.2610	3533976.2909
47	TP	10215265.2886	3533980.5671
48	FENCE	10215314.4084	3534043.2439
49	TP	10215180.1117	3534016.5399
50	TP	10215194.7171	3534030.2031
51	TP	10215163.7159	3534034.0664
52	TP	10215187.8855	3534037.5058
53	TP	10215218.6159	3534066.2538
54	TP	10215209.0517	3534076.4776
55	SET	10215290.6104	3534141.9964
56	SET	10215294.8412	3534149.2318
57	SET	10215339.4969	3534186.3223
58	SET	10215343.7277	3534193.5577
59	PROP. BOUNDARY	10215517.8789	3534304.8456
60	PROP. BOUNDARY	10215719.3204	3534086.4649
61	PROP. BOUNDARY	10215101.3774	3533927.2183
62	PROP. BOUNDARY	10215319.4880	3533700.6799

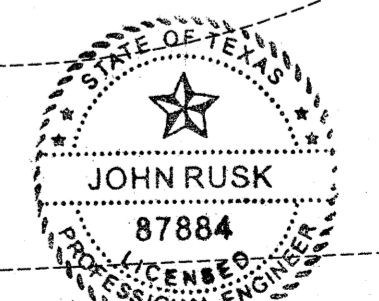


DESIGNED BY: COLE CHRISTIAN, P.E.
DRAWN BY: CCC
SHEET CHK'D BY: JML
CROSS CHK'D BY: JML
APPROVED BY: CCC
DATE: FEBRUARY 2022

CDM Smith
9430 Research Blvd., Suite 1-200
Austin, TX 78759
Tel: (512) 345-1100
TBPE Firm Registration No. F-3043

CITY OF BRYAN, TEXAS
CHICK LANE ELEVATED STORAGE TANK

PROPOSED SITE, STAKING, PAVING, AND FENCING PLAN



PROJECT NO. 2381-266753
FILE NAME: N/A
SHEET NO. C-2

REV. NO.	DATE	DRWN	CHKD	REMARKS

© 2022 CDM SMITH ALL RIGHTS RESERVED. THESE DOCUMENTS AND DESIGNS PROVIDED BY PROFESSIONAL SERVICE, INCORPORATED HEREIN, ARE THE PROPERTY OF CDM SMITH AND ARE NOT TO BE USED, IN WHOLE OR PART, FOR ANY OTHER PROJECT WITHOUT THE WRITTEN AUTHORIZATION OF CDM SMITH.

- NOTE:
- 1) CONTRACTOR SHALL MAINTAIN EROSION CONTROL MEASURE THROUGHOUT THE COURSE OF THE PROJECT.
 - 2) SILT FENCE SHALL BE INSTALLED DOWNSTREAM, AND DIRECTLY ADJACENT TO ALL LAY DOWN AREAS.
 - 3) NO CONSTRUCTION DEBRIS SHALL BE ALLOWED ON CHICK LANE OR OUTSIDE THE LIMITS OF CONSTRUCTION.
 - 4) LEGAL DESCRIPTION: LOT 50 IN BLOCK 21 EDGEWATER SUBDIVISION - PHASE 3
 - 5) ZONING DESCRIPTION: PLANNED DEVELOPMENT - HOUSING DISTRICT (PD-H)
 - 6) WHERE ELECTRIC FACILITIES ARE INSTALLED, BTU HAS THE RIGHT TO INSTALL, OPERATE, RELOCATE, CONSTRUCT, RECONSTRUCT, ADD TO, MAINTAIN, INSPECT, PATROL, ENLARGE, REPAIR, REMOVE AND REPLACE SAID FACILITIES UPON, OVER, UNDER, AND ACROSS THE PROPERTY INCLUDED IN THE PUE, AND THE OF INGRESS AND EGRESS ON PROPERTY ADJACENT TO THE PUE TO ACCESS ELECTRIC FACILITIES. BTU WILL REPAIR ANY DAMAGE ASSOCIATED WITH ACCESSING THE SITE.



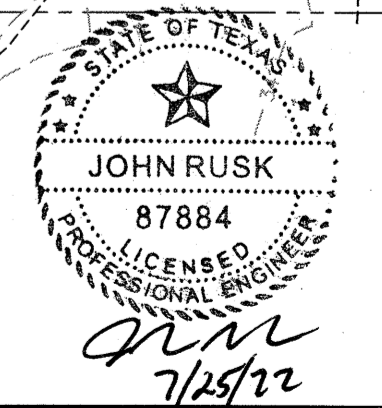
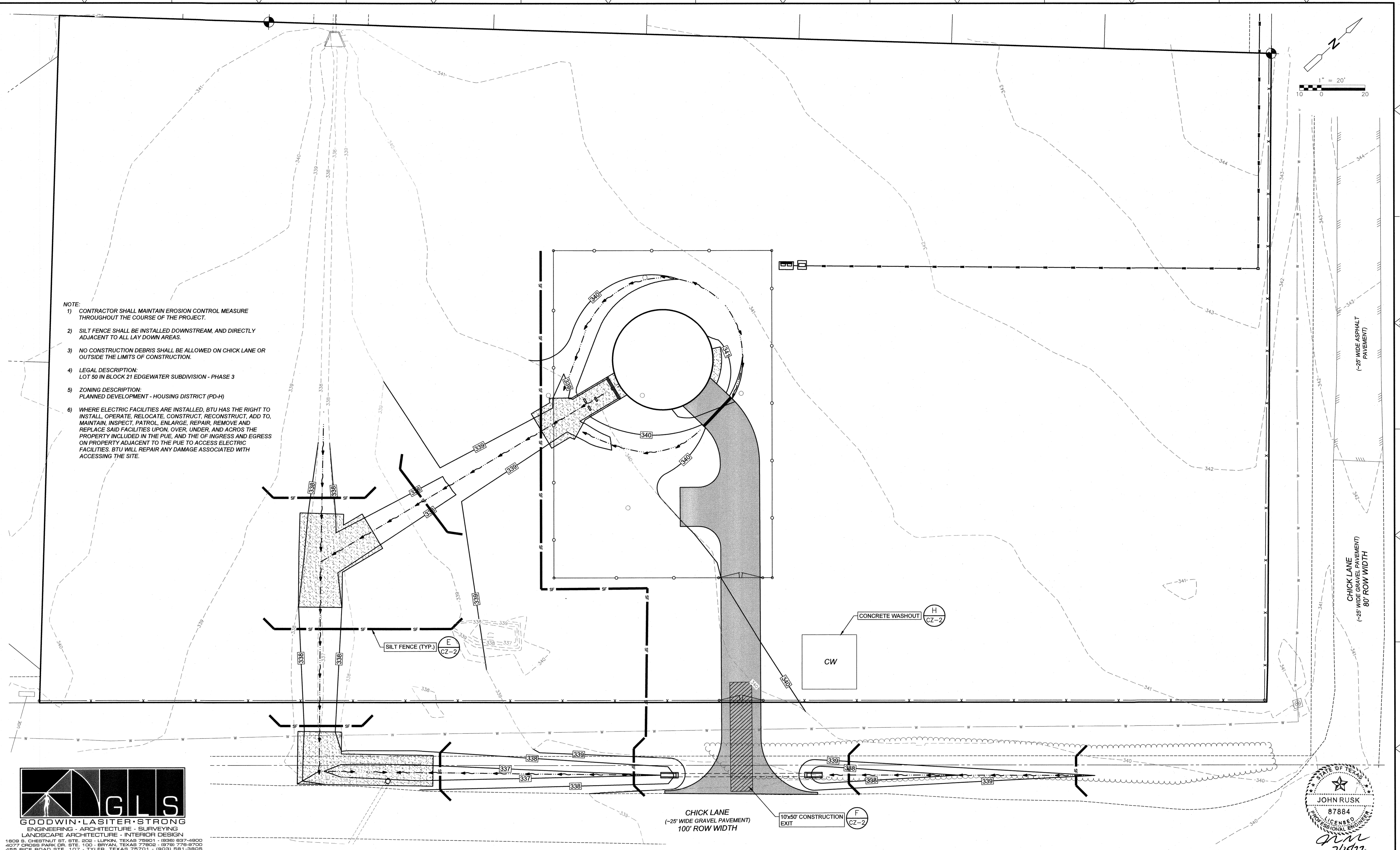
DESIGNED BY: COLE CHRISTIAN, P.E.
 DRAWN BY: CCC
 SHEET CHK'D BY: JML
 CROSS CHK'D BY: JML
 APPROVED BY: CCC
 DATE: FEBRUARY 2022

CDM Smith
 9430 Research Blvd., Suite 1-200
 Austin, TX 78759
 Tel: (512) 346-1100
 TBPE Firm Registration No. F-3043

CITY OF BRYAN, TEXAS
CHICK LANE ELEVATED STORAGE TANK

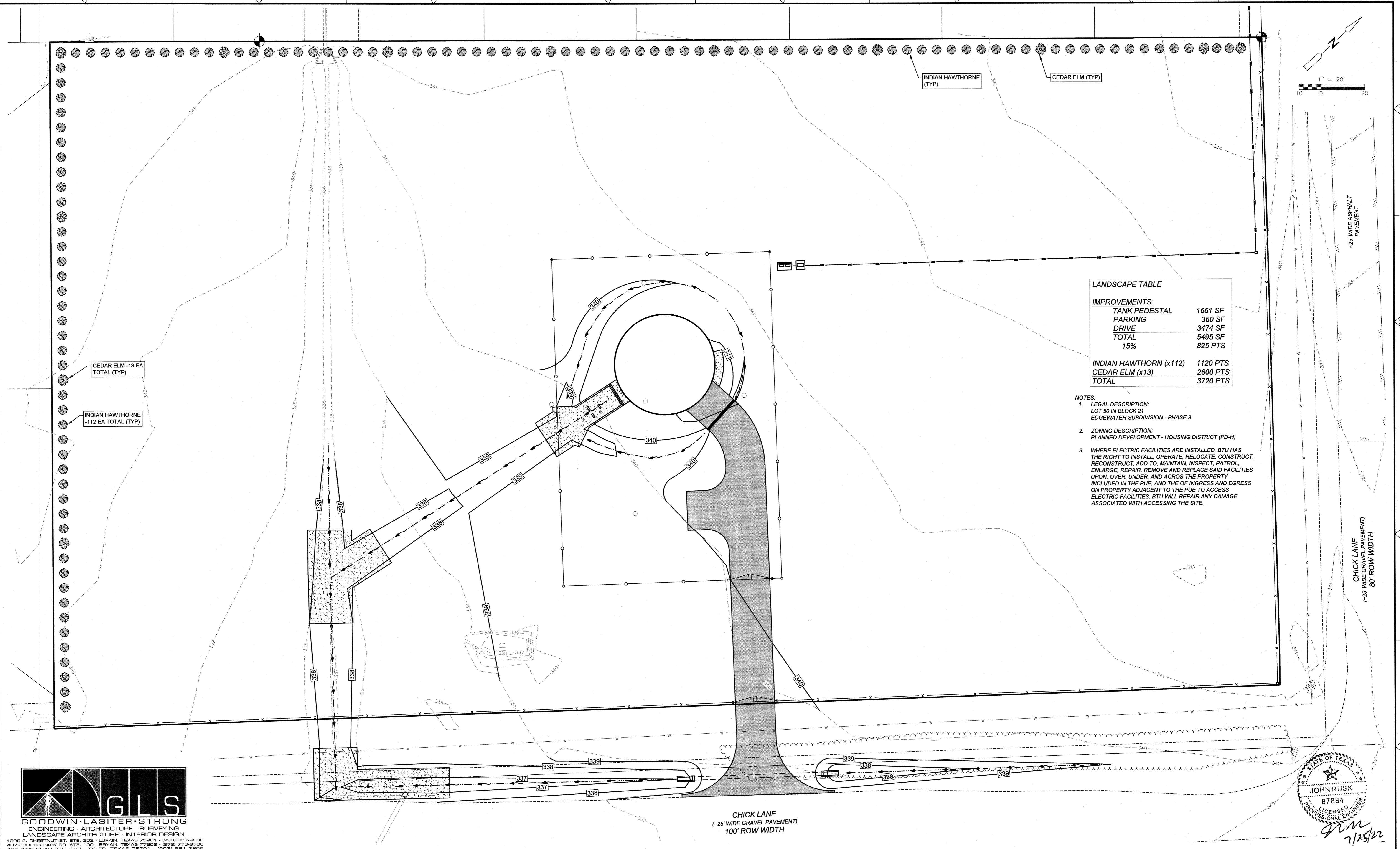
EROSION CONTROL PLAN

PROJECT NO. 2381-266753
 FILE NAME: N/A
 SHEET NO.
C-3



REV. NO.	DATE	DRWN	CHKD	REMARKS

© 2022 CDM SMITH. ALL RIGHTS RESERVED. THESE DOCUMENTS AND DESIGNS PROVIDED BY PROFESSIONAL SERVICE, INCORPORATED HEREIN, ARE THE PROPERTY OF CDM SMITH AND ARE NOT TO BE USED, IN WHOLE OR PART, FOR ANY OTHER PROJECT WITHOUT THE WRITTEN AUTHORIZATION OF CDM SMITH.



LANDSCAPE TABLE

IMPROVEMENTS:	
TANK PEDESTAL	1661 SF
PARKING	360 SF
DRIVE	3474 SF
TOTAL	5495 SF
15%	825 PTS
INDIAN HAWTHORNE (x112) 1120 PTS	
CEDAR ELM (x13) 2600 PTS	
TOTAL	3720 PTS

- NOTES:**
- LEGAL DESCRIPTION:
LOT 50 IN BLOCK 21
EDGEWATER SUBDIVISION - PHASE 3
 - ZONING DESCRIPTION:
PLANNED DEVELOPMENT - HOUSING DISTRICT (PD-H)
 - WHERE ELECTRIC FACILITIES ARE INSTALLED, BTU HAS THE RIGHT TO INSTALL, OPERATE, RELOCATE, CONSTRUCT, RECONSTRUCT, ADD TO, MAINTAIN, INSPECT, PATROL, ENLARGE, REPAIR, REMOVE AND REPLACE SAID FACILITIES UPON, OVER, UNDER, AND ACROSS THE PROPERTY INCLUDED IN THE PUE, AND THE OF INGRESS AND EGRESS ON PROPERTY ADJACENT TO THE PUE TO ACCESS ELECTRIC FACILITIES. BTU WILL REPAIR ANY DAMAGE ASSOCIATED WITH ACCESSING THE SITE.



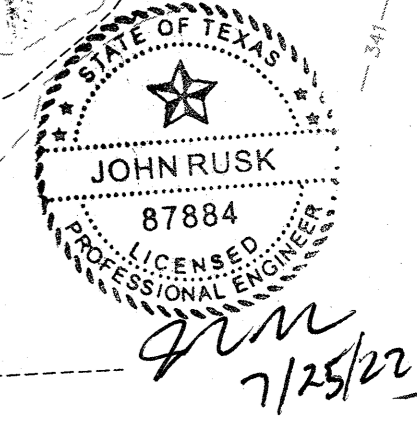
DESIGNED BY: COLE CHRISTIAN, P.E.
 DRAWN BY: CCC
 SHEET CHK'D BY: JML
 CROSS CHK'D BY: JML
 APPROVED BY: CCC
 DATE: FEBRUARY 2022

CDM Smith
 9430 Research Blvd., Suite 1-200
 Austin, TX 78759
 Tel: (512) 349-1100
 TBPE Firm Registration No. F-3043

CITY OF BRYAN, TEXAS
CHICK LANE ELEVATED STORAGE TANK

LANDSCAPE PLAN

PROJECT NO. 2381-266753
 FILE NAME: N/A
 SHEET NO.
C-5



REV. NO.	DATE	DRWN	CHKD	REMARKS

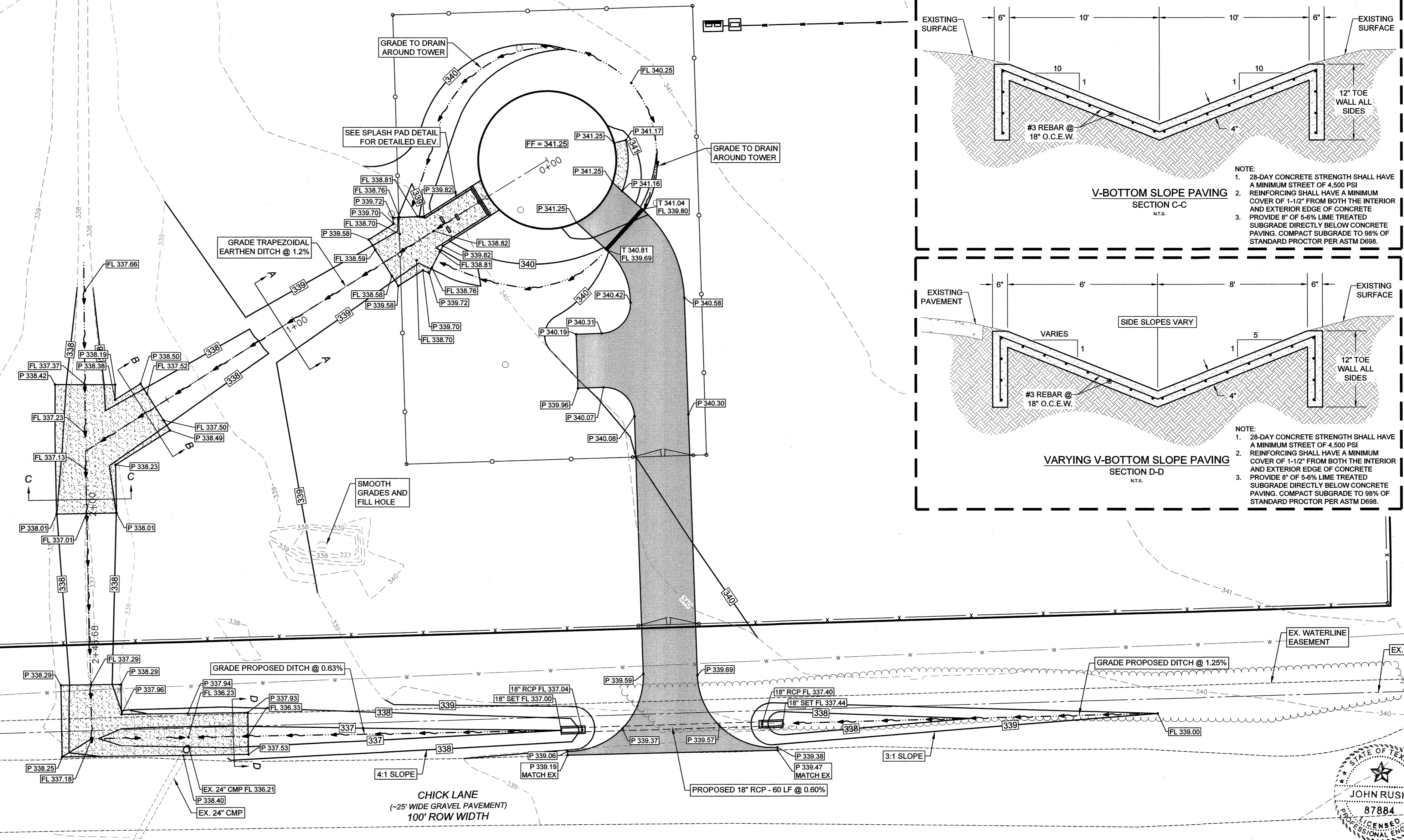
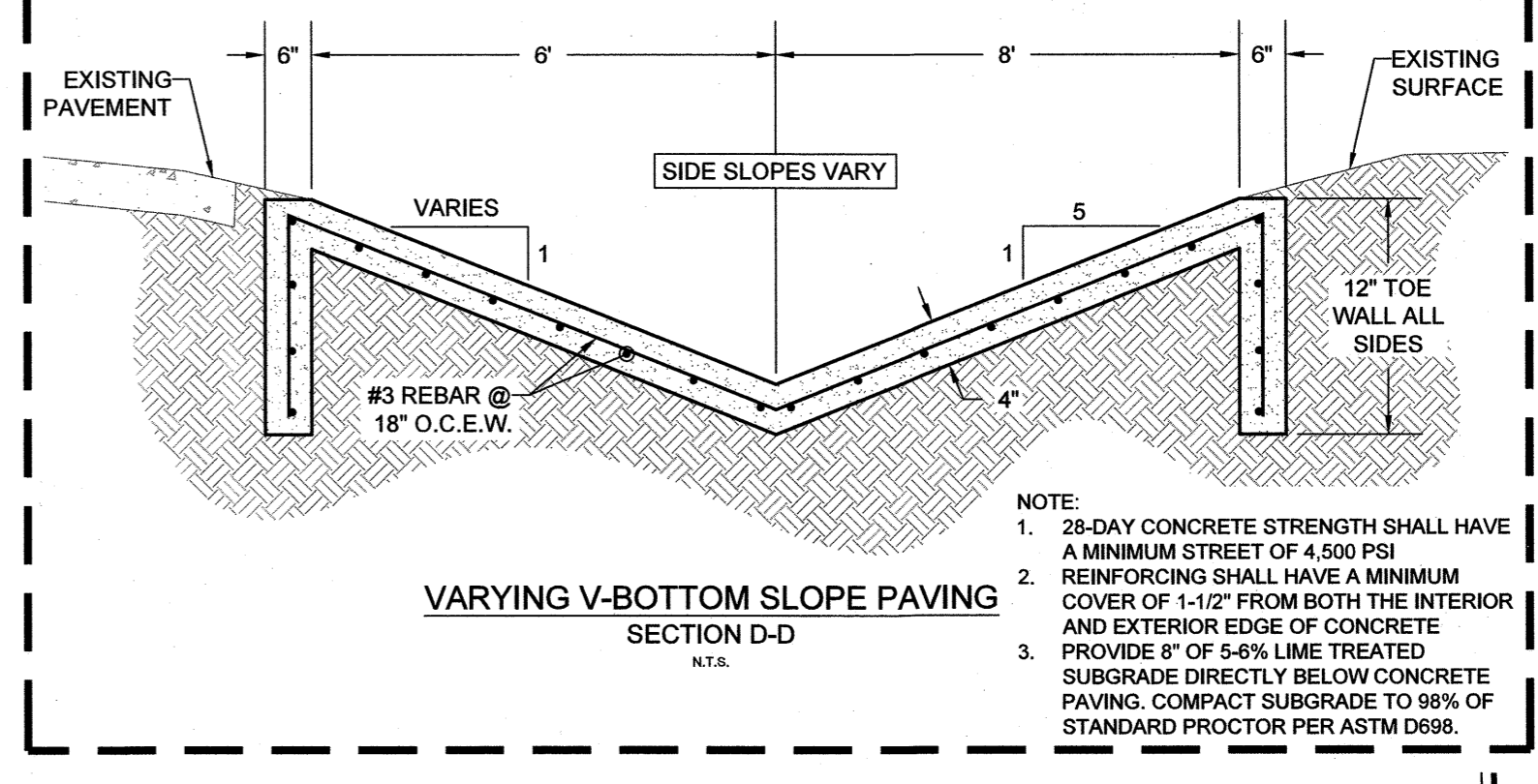
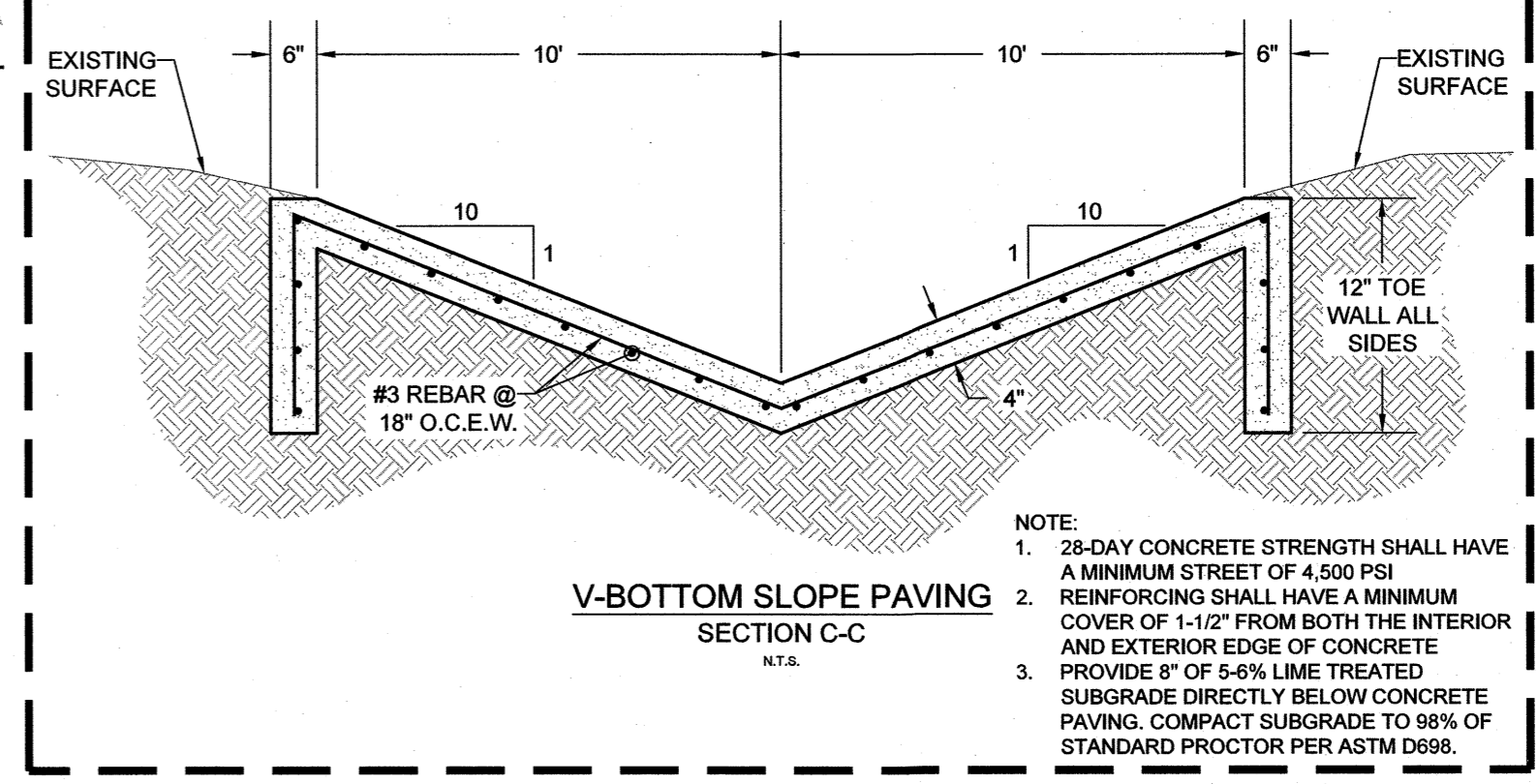
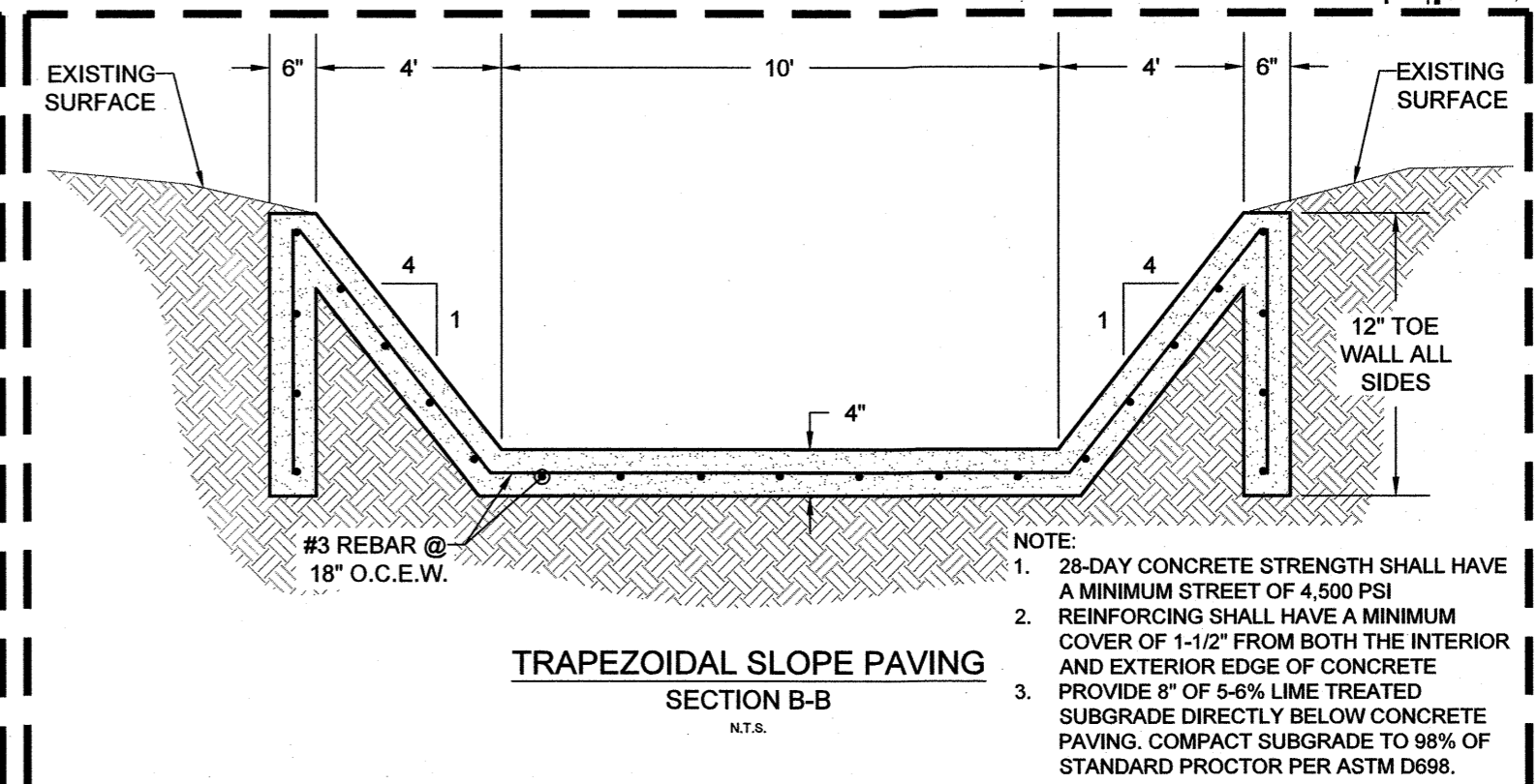
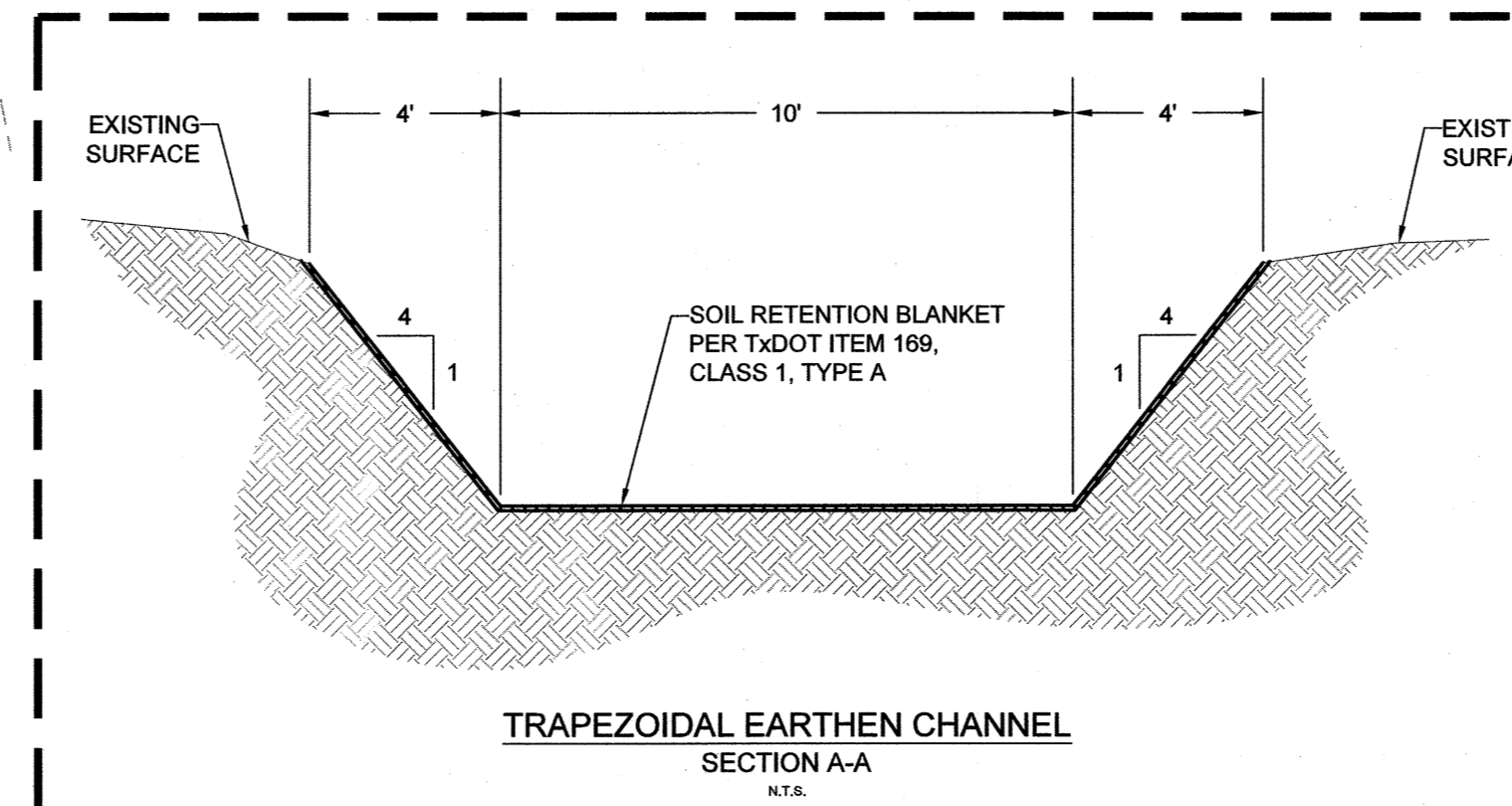
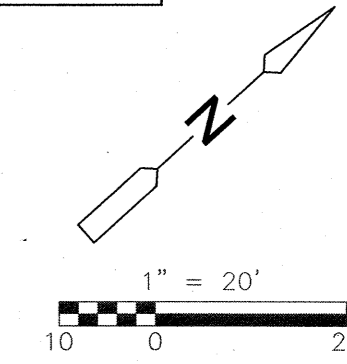
© 2022 CDM SMITH. ALL RIGHTS RESERVED. THESE DOCUMENTS AND DESIGNS PROVIDED BY PROFESSIONAL SERVICE, INCORPORATED HEREIN, ARE THE PROPERTY OF CDM SMITH AND ARE NOT TO BE USED, IN WHOLE OR PART, FOR ANY OTHER PROJECT WITHOUT THE WRITTEN AUTHORIZATION OF CDM SMITH.

NOTES:

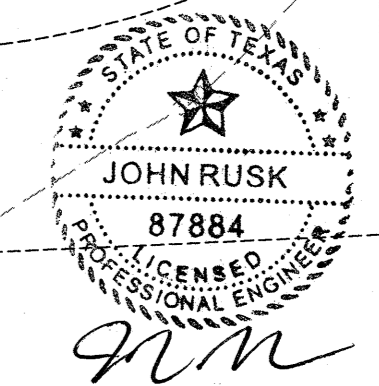
- LEGAL DESCRIPTION:
LOT 50 IN BLOCK 21
EDGEWATER SUBDIVISION - PHASE 3
- ZONING DESCRIPTION:
PLANNED DEVELOPMENT - HOUSING DISTRICT (PD-H)
- WHERE ELECTRIC FACILITIES ARE INSTALLED, BTU HAS THE RIGHT TO INSTALL, OPERATE, RELOCATE, CONSTRUCT, RECONSTRUCT, ADD TO, MAINTAIN, INSPECT, PATROL, ENLARGE, REPAIR, REMOVE AND REPLACE SAID FACILITIES UPON, OVER, UNDER, AND ACROSS THE PROPERTY INCLUDED IN THE PUE, AND THE OF INGRESS AND EGRESS ON PROPERTY ADJACENT TO THE PUE TO ACCESS ELECTRIC FACILITIES. BTU WILL REPAIR ANY DAMAGE ASSOCIATED WITH ACCESSING THE SITE.

TBM#5285
1/2" Iron Rod
N:10215388.7223
E:3533767.3363
Elev=341.47

TBM#5092
1/2" Iron Rod
(Capped 6200)
N:10215719.3168
E:3534086.4643
Elev=344.26



1809 S. CHESTNUT ST., STE. 202 - LUFKIN, TEXAS 75901 - (936) 637-4900
4077 CROSS PARK DR., STE. 100 - BRYAN, TEXAS 77802 - (877) 776-9700
453 RICE ROAD STE. 107 - TYLER, TEXAS 75701 - (903) 581-3808



REV. NO.	DATE	DRWN	CHKD	REMARKS

DESIGNED BY: COLE CHRISTIAN, P.E.
DRAWN BY: CCC
SHEET CHK'D BY: JML
CROSS CHK'D BY: JML
APPROVED BY: CCC
DATE: FEBRUARY 2022

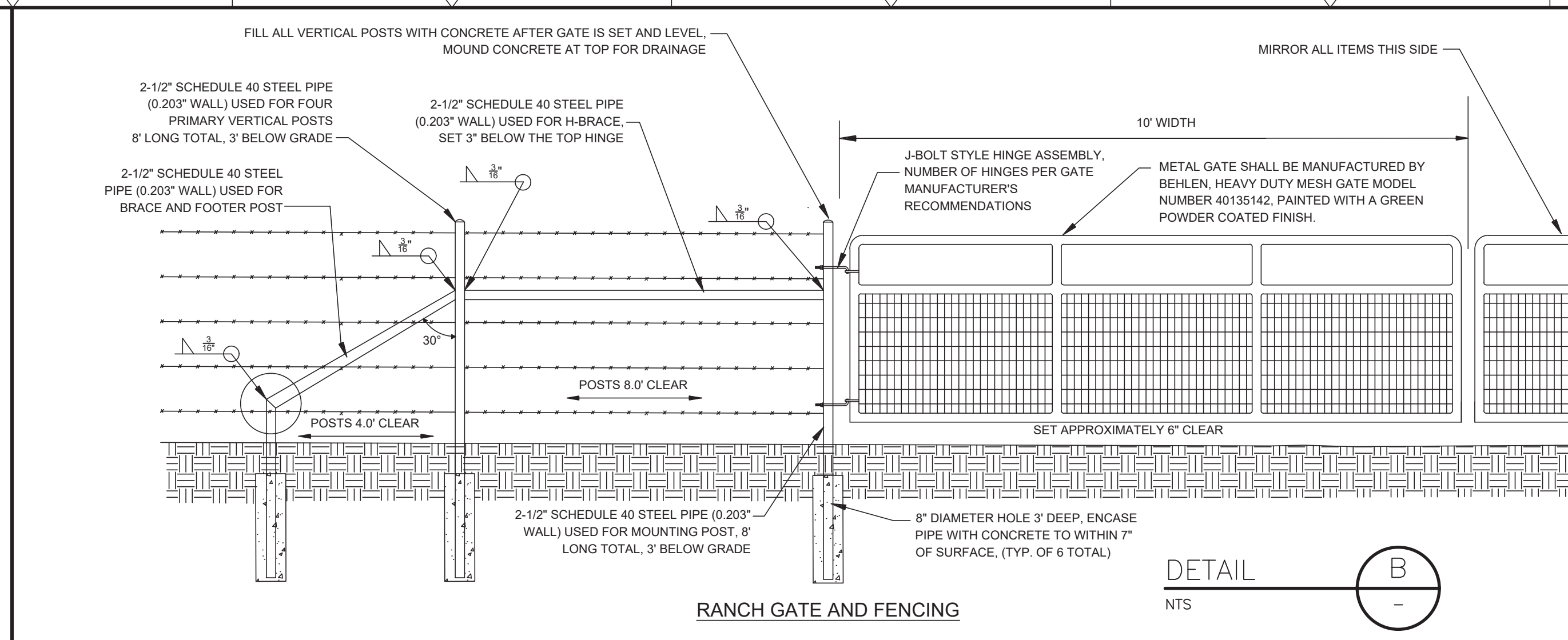
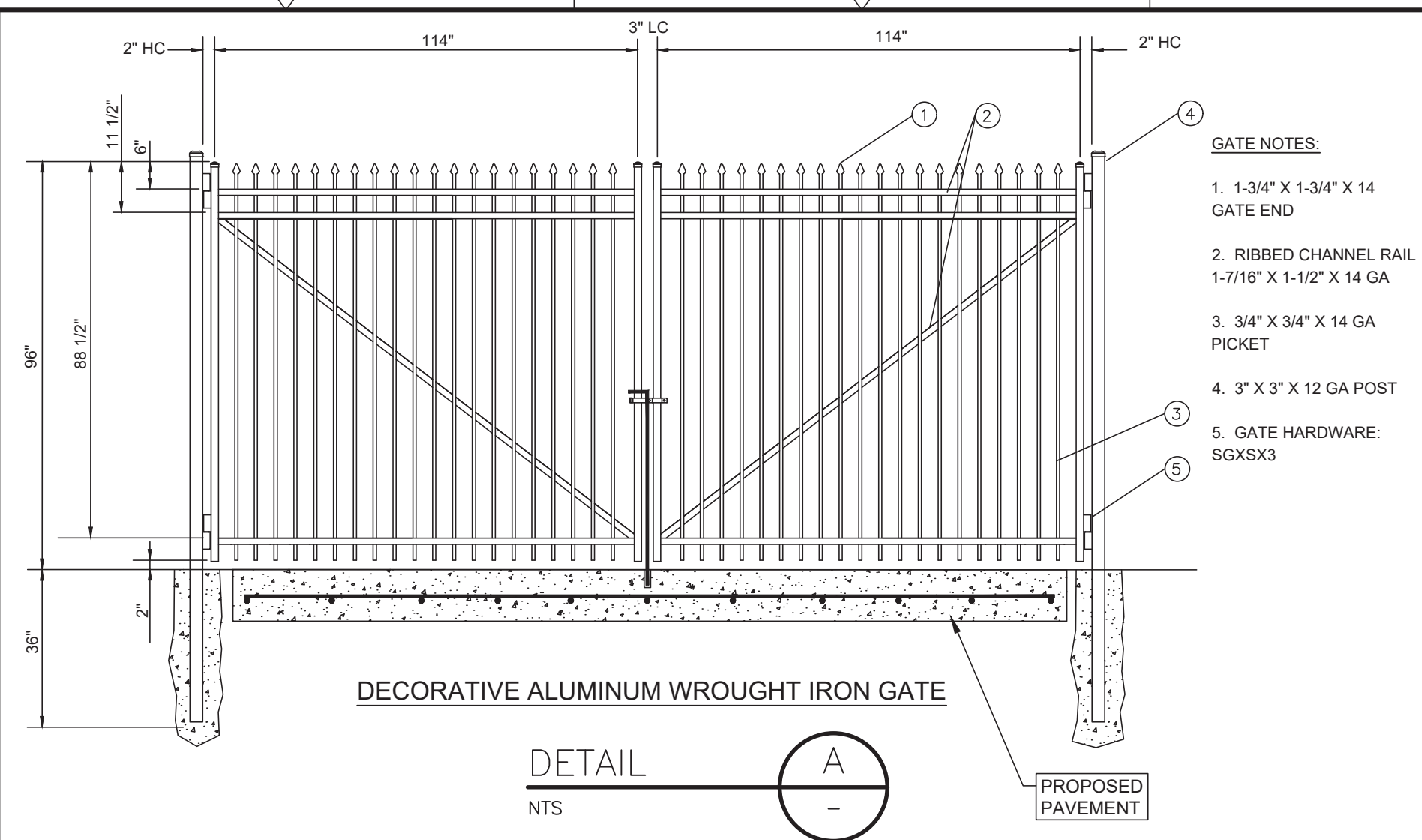
CDM Smith
9430 Research Blvd., Suite 1-200
Austin, TX 78759
Tel: (512) 346-1100
TBPE Firm Registration No. F-3043

CITY OF BRYAN, TEXAS
CHICK LANE ELEVATED STORAGE TANK

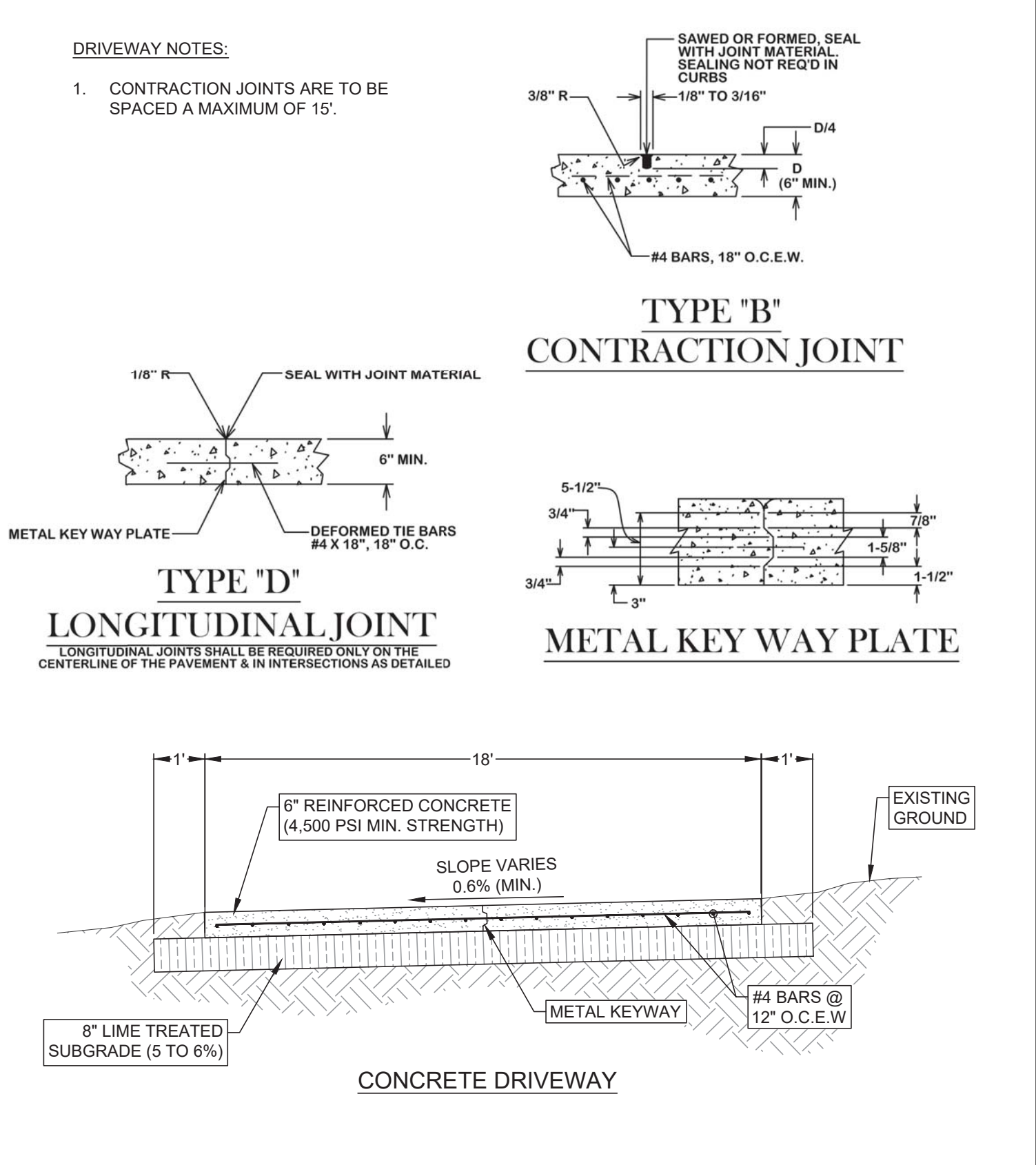
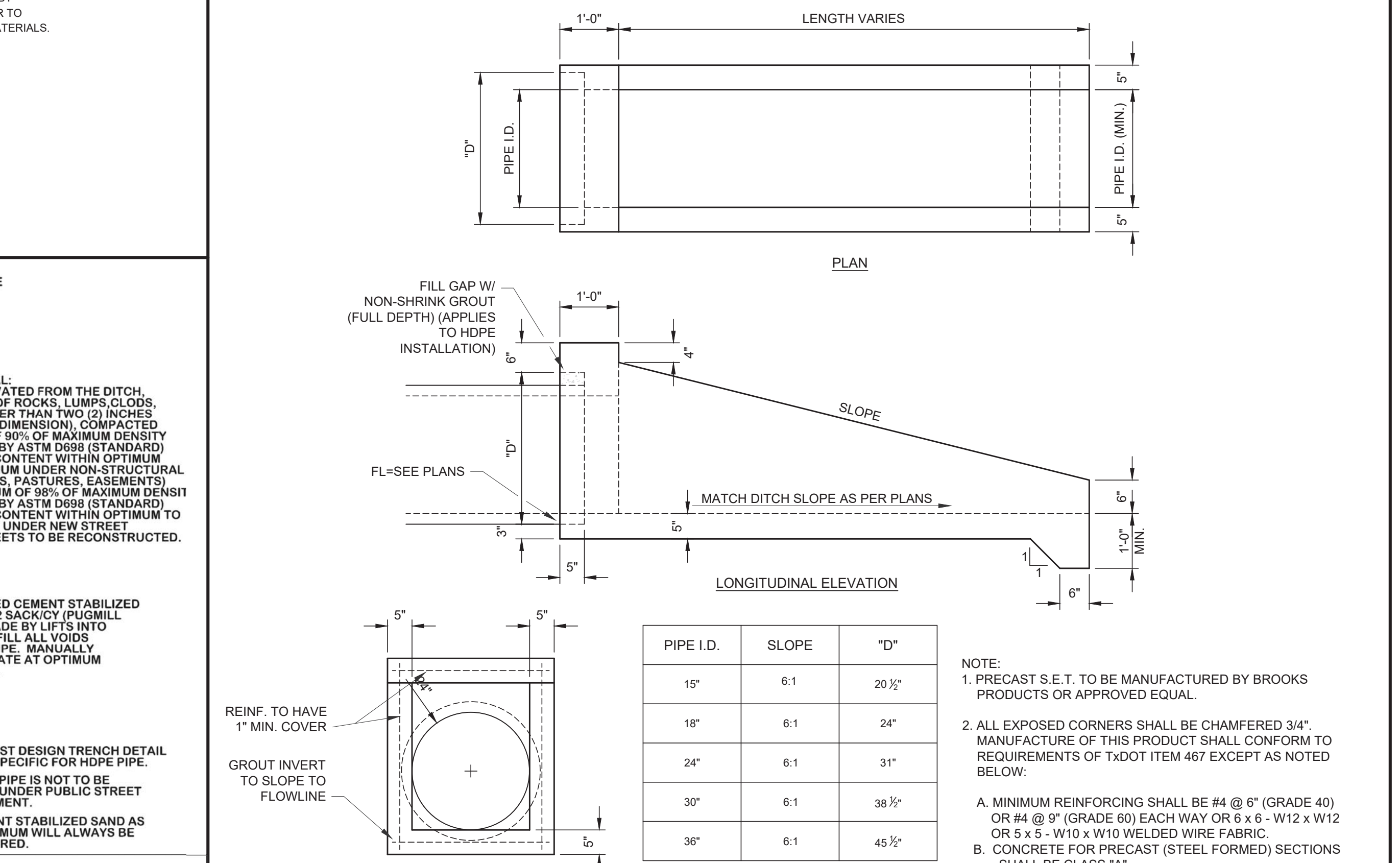
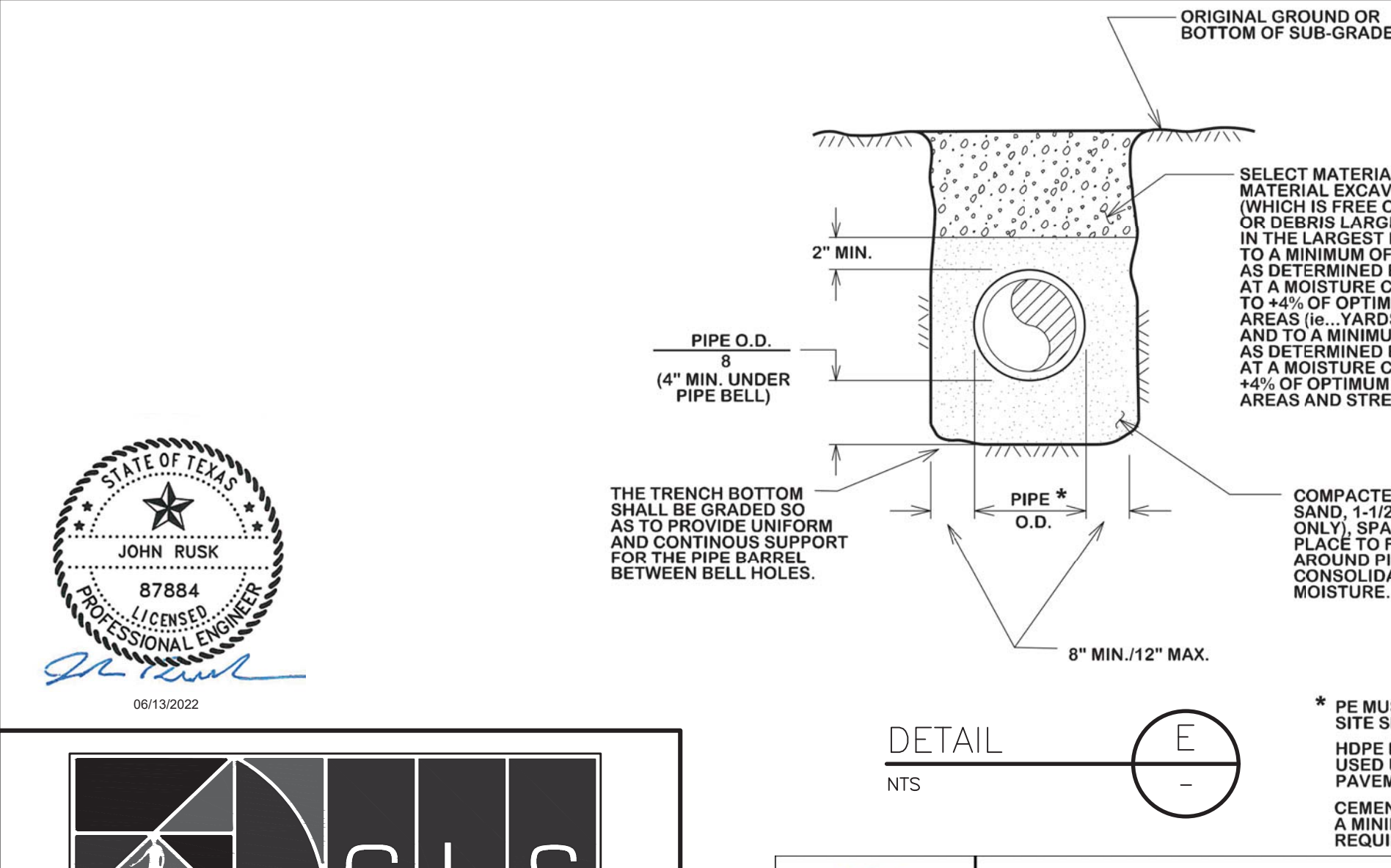
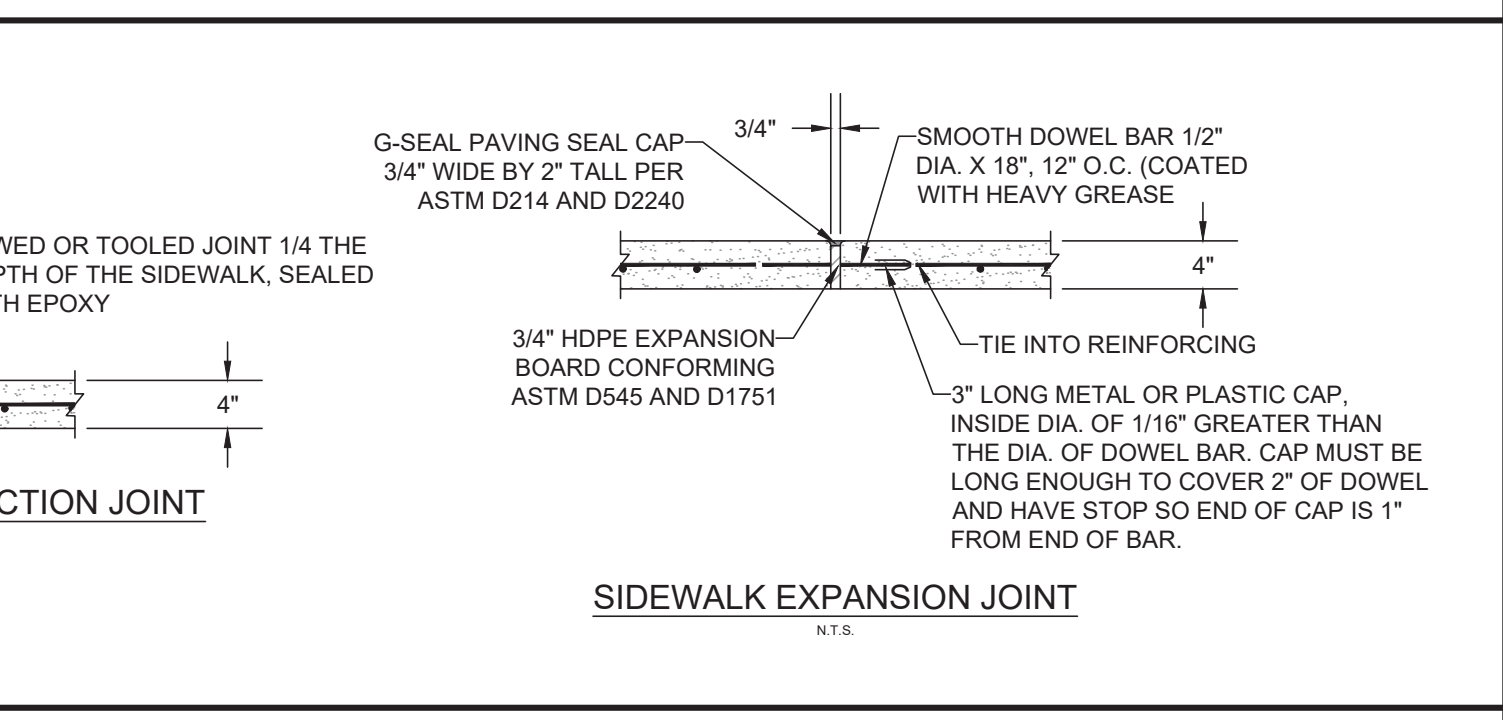
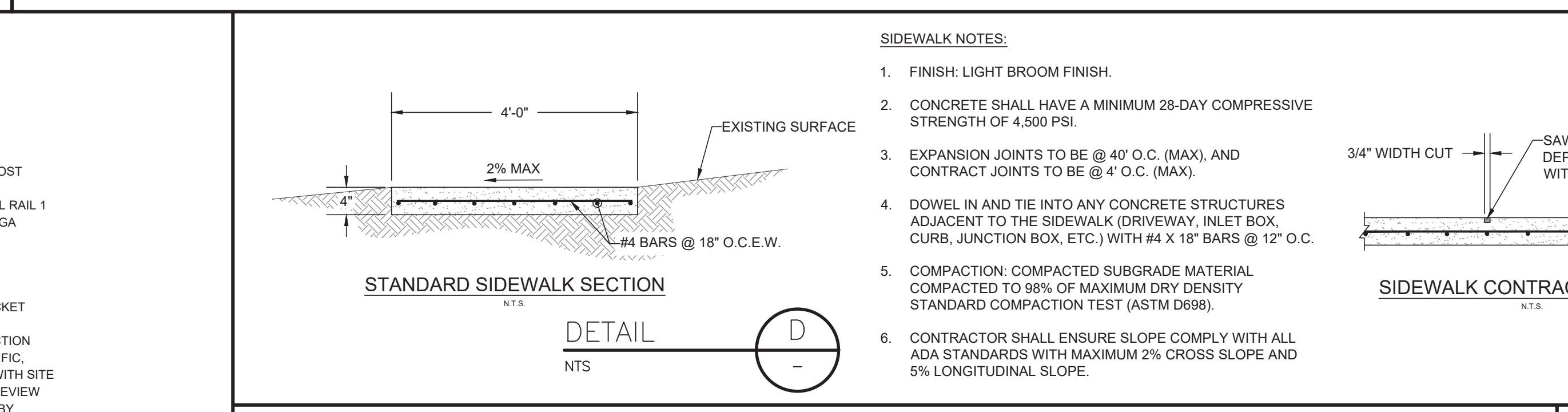
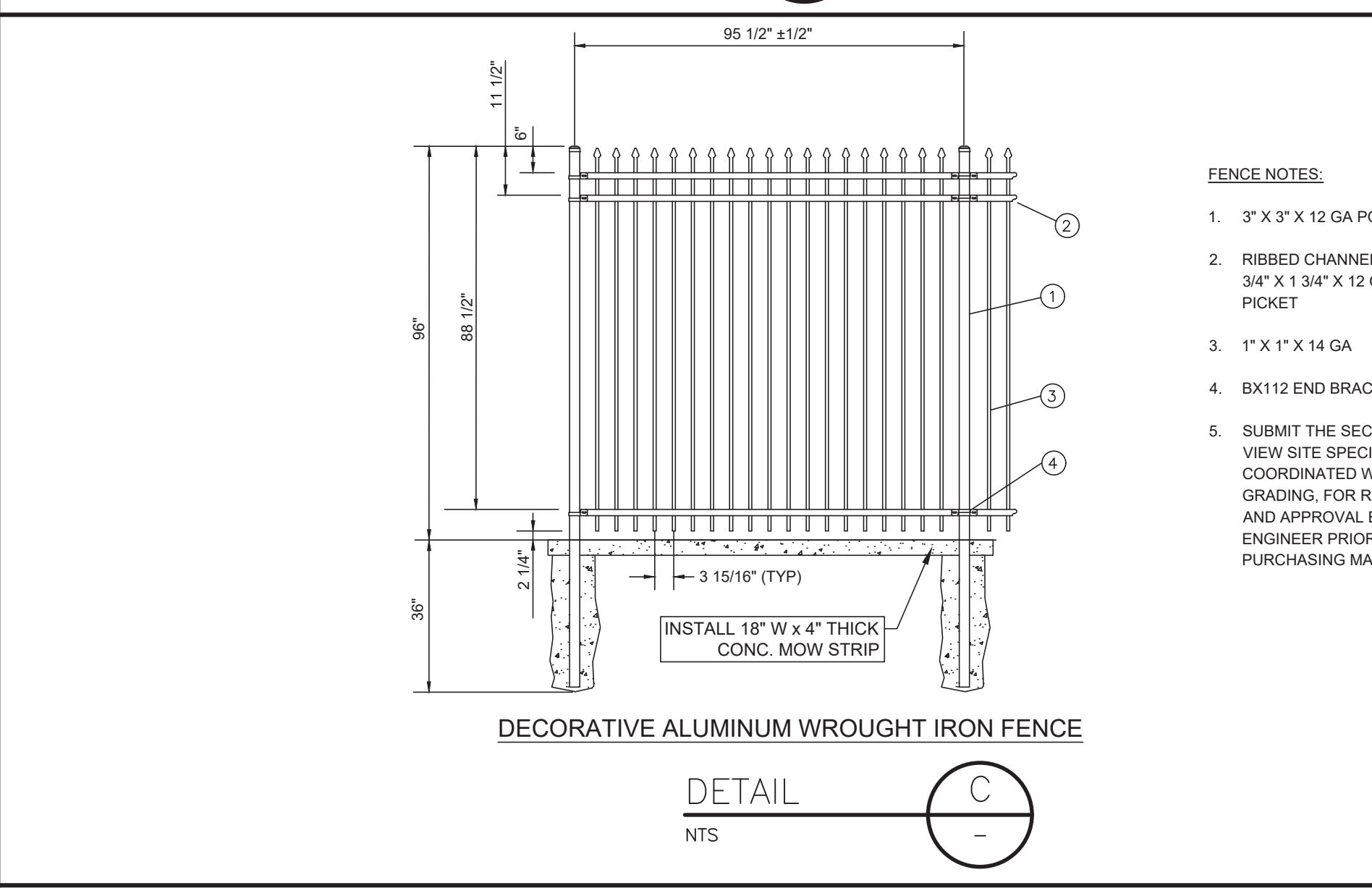
GRADING PLAN

PROJECT NO. 2381-266753
FILE NAME: N/A
SHEET NO.
CR-1

© 2022 CDM SMITH ALL RIGHTS RESERVED. REUSE OF DOCUMENTS: THESE DOCUMENTS AND DESIGNS PROVIDED BY PROFESSIONAL SERVICE, INCORPORATED HEREIN, ARE THE PROPERTY OF CDM SMITH AND ARE NOT TO BE USED, IN WHOLE OR PART, FOR ANY OTHER PROJECT WITHOUT THE WRITTEN AUTHORIZATION OF CDM SMITH.



- BARBED WIRE FENCE NOTES:**
- POST AND PIPE HOLES SHALL BE ADVANCED TO A THREE FOOT DEPTH REGARDLESS OF WHETHER OR NOT ROCK IS ENCOUNTERED.
 - ALL WELDS SHALL BE GROUND SMOOTH TO BE FREE FROM BURRS AND SHARP EDGES.
 - ALL WELDS SHALL BE CONTINUOUS.
 - PIPE SHALL CONFORM WITH ASTM A500 REQUIREMENTS.
 - CONTRACTOR SHALL FIELD VERIFY NUMBER OF STRANDS ON EXISTING BARBED WIRE FENCE & MATCH NUMBER OF STRANDS, NO EXTRA PAY IF EXISTING FENCE IS DIFFERENT FROM DRAWING CALLOUT.
 - METAL GATE SHALL BE MANUFACTURED BY BEHLEN, HEAVY DUTY MESH GATE MODEL NUMBER 40135142, PAINTED WITH A GREEN POWDER COATED FINISH.
 - WELDS FOR VERTICAL POSTS
 - SUPPORTING END BRACES SHALL BE A MINIMUM OF FIVE INCHES ABOVE FINISHED GRADE.
 - POSTS SHALL BE SET TO PROVIDE A NOMINAL CLEAR WIDTH OF 20-FEET. VERIFY EXACT WIDTH OF GATE AND HINGE DIMENSIONS TO CONFIRM EXACT CLEAR OPENING IN THE FIELD.
 - BARBED WIRE SHALL BE 12.5 GAUGE GALVANIZED STEEL WIRE CONTAINING FOUR-POINT BARBS AT A MAXIMUM SPACING OF FIVE INCHES. PROVIDE WELD-ON CLIPS FOR CONNECTION OF WIRE TO STEEL POSTS.
 - BARBED WIRE SHALL EXTEND TO THE NEXT LINE POST AND BE SECURED TO THE EXISTING WIRE FENCE ON BOTH SIDES OF THE GATE.
 - CONCRETE SHALL HAVE A MINIMUM STRENGTH OF 4500 PSI AT 28 DAYS.
 - WIRE MESH SHALL BE ADDED WHEN PRESENT ON EXISTING FENCE. WIRE MESH SHALL BE EQUAL OR BETTER THAN EXISTING WIRE MESH.
 - COORDINATE WITH LANDOWNER IF GATE WORK EXTENDS OUTSIDE OF EASEMENT.



BEDDING AND TRENCH FOR REINFORCED CONCRETE PIPE

DATE: **AUG. 2012** B/C/S UNIFIED STANDARD DETAIL: **D3-03**

DESIGNED BY: COLE CHRISTIAN, P.E.
 DRAWN BY: CCC
 SHEET CHK'D BY: JML
 CROSS CHK'D BY: JML
 APPROVED BY: CCC
 DATE: FEBRUARY 2022



CITY OF BRYAN, TEXAS
CHICK LANE ELEVATED STORAGE TANK

CIVIL STANDARD DETAILS I

PROJECT NO. 2381-266753
 FILE NAME: N/A
 SHEET NO. **CZ-1**

REV. NO.	DATE	DRWN	CHKD	REMARKS

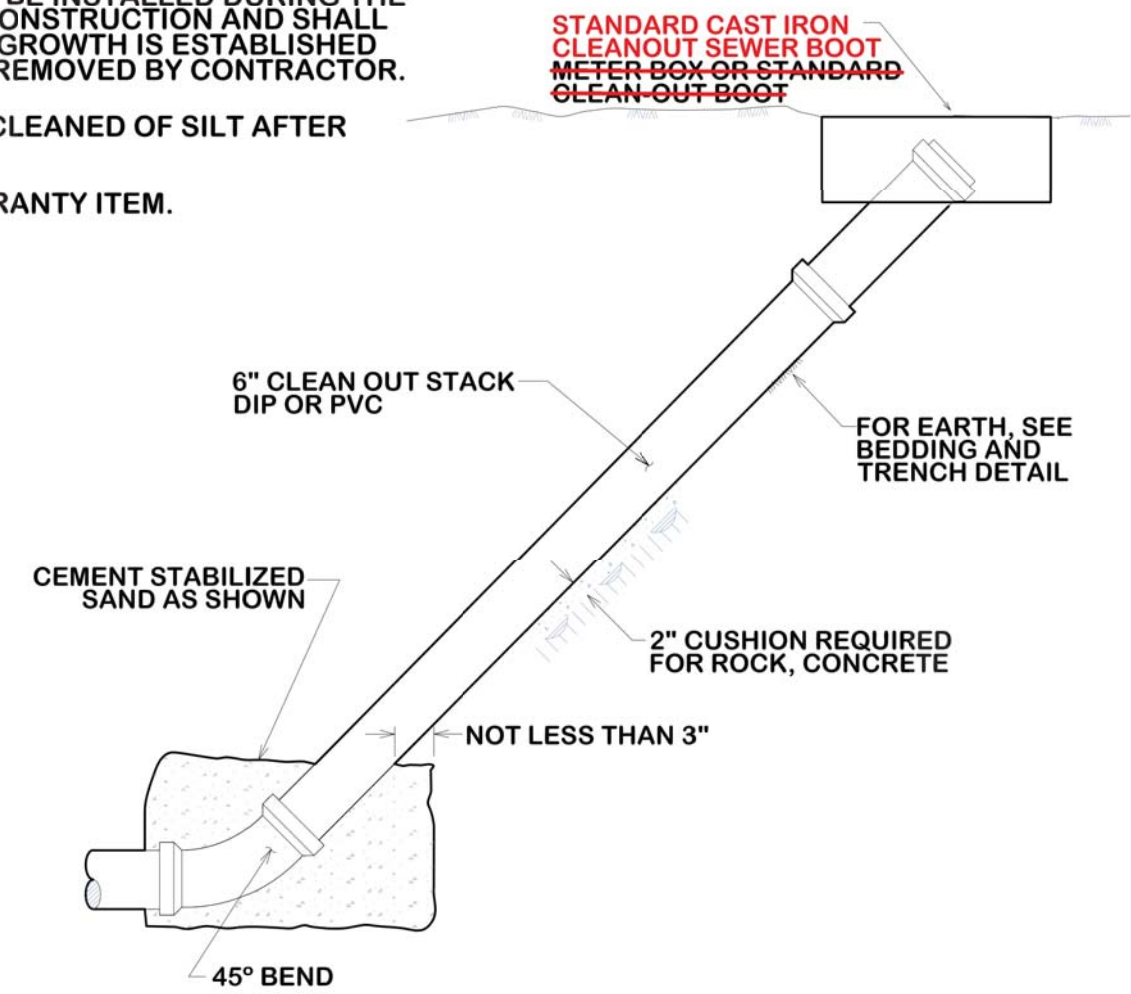
GENERAL NOTES:

ALL AREAS WHERE EXISTING VEGETATION AND GRASS COVER HAVE BEEN BARED BY CONSTRUCTION SHALL BE ADEQUATELY BLOCK SODDED OR HYDROMULCHED AND WATERED UNTIL GROWTH IS ESTABLISHED. IN DEVELOPED AREAS WHERE GRASS IS PRESENT, BLOCK SOD WILL BE REQUIRED. BARED AREAS SHALL BE SEEDED OR SODDED WITHIN 14 CALENDAR DAYS OF LAST DISTURBANCE.

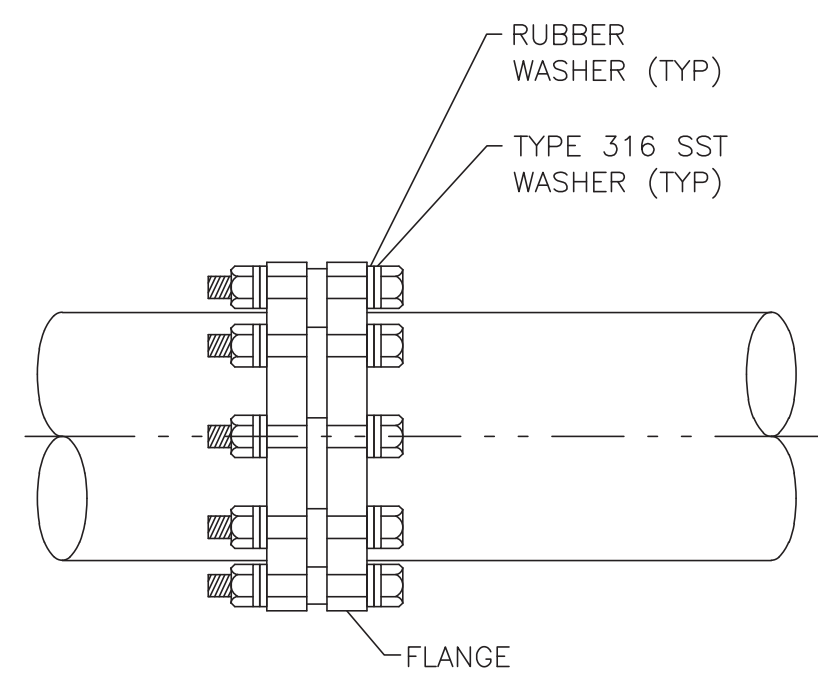
APPROVED EROSION CONTROL MEASURES MUST BE INSTALLED DURING THE ENTIRE TIME THAT EARTH HAS BEEN BARED BY CONSTRUCTION AND SHALL STAY IN PLACE UNTIL ACCEPTABLE VEGETATIVE GROWTH IS ESTABLISHED AFTER CONSTRUCTION IS COMPLETE AND THEN REMOVED BY CONTRACTOR.

ALL EROSION CONTROL MEASURES SHOULD BE CLEANED OF SILT AFTER EVERY RAIN.

ESTABLISHMENT OF VEGETATION MAY BE A WARRANTY ITEM.

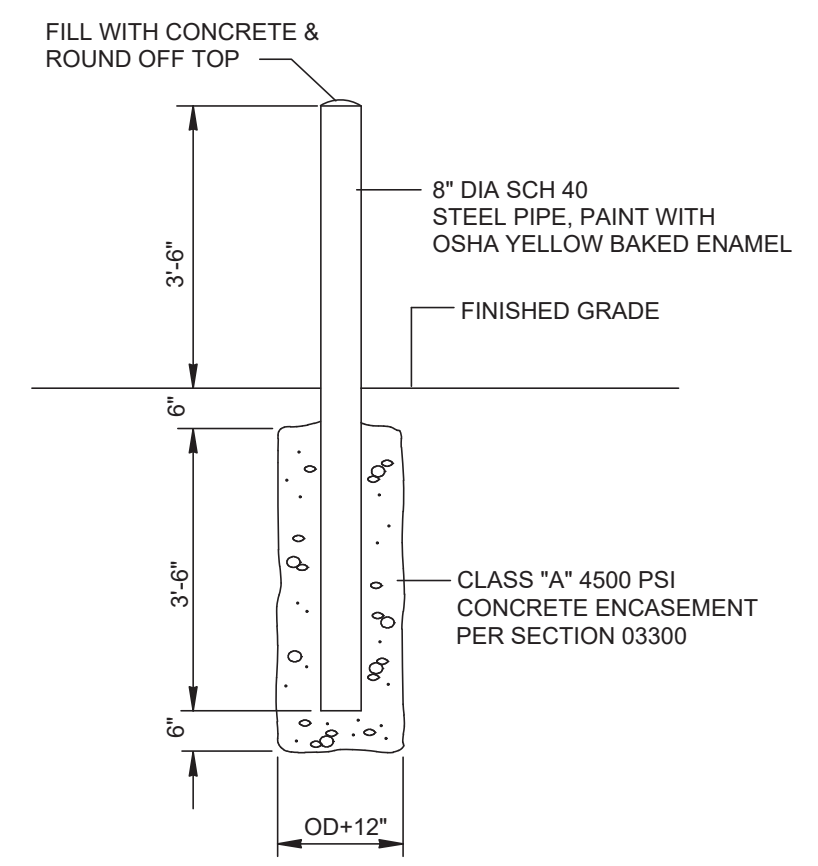


PIPE LINE CLEANOUT
DETAIL A

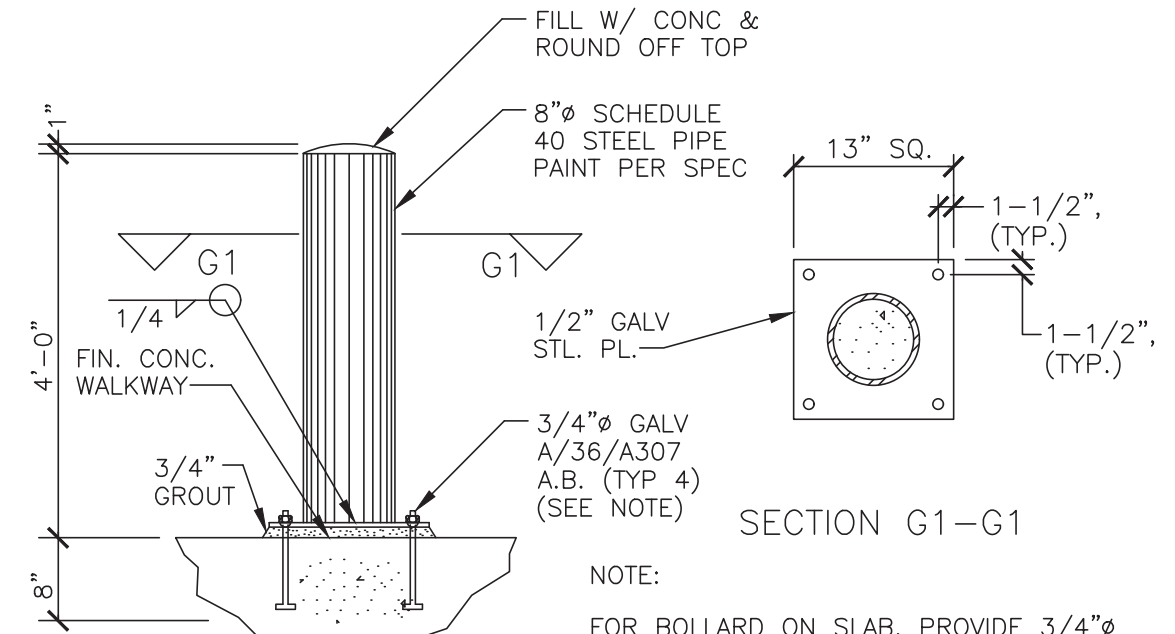


NOTE:
1 ALL NUTS, BOLTS, AND WASHERS SHALL BE TYPE 316 SST MATERIALS.

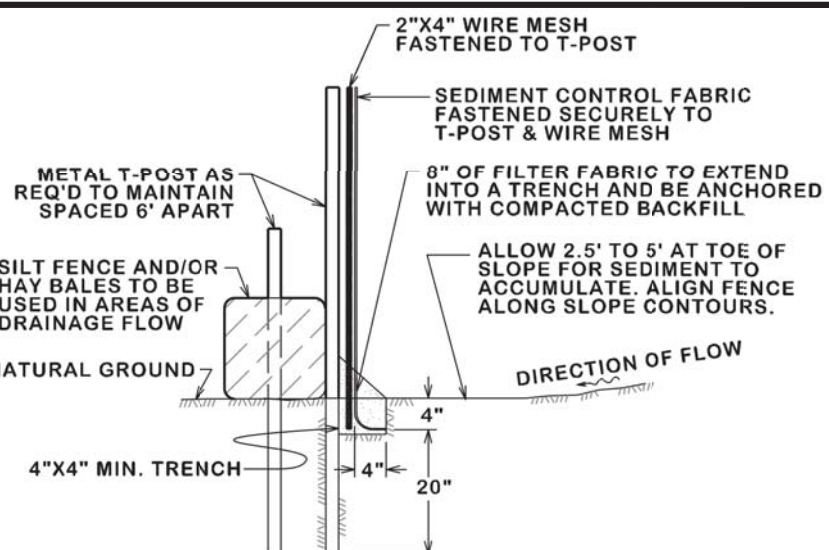
INSULATING FLANGE ASSEMBLY
DETAIL B



EXTERIOR BOLLARDS
DETAIL C



INTERIOR TRUCK BOLLARD
DETAIL D



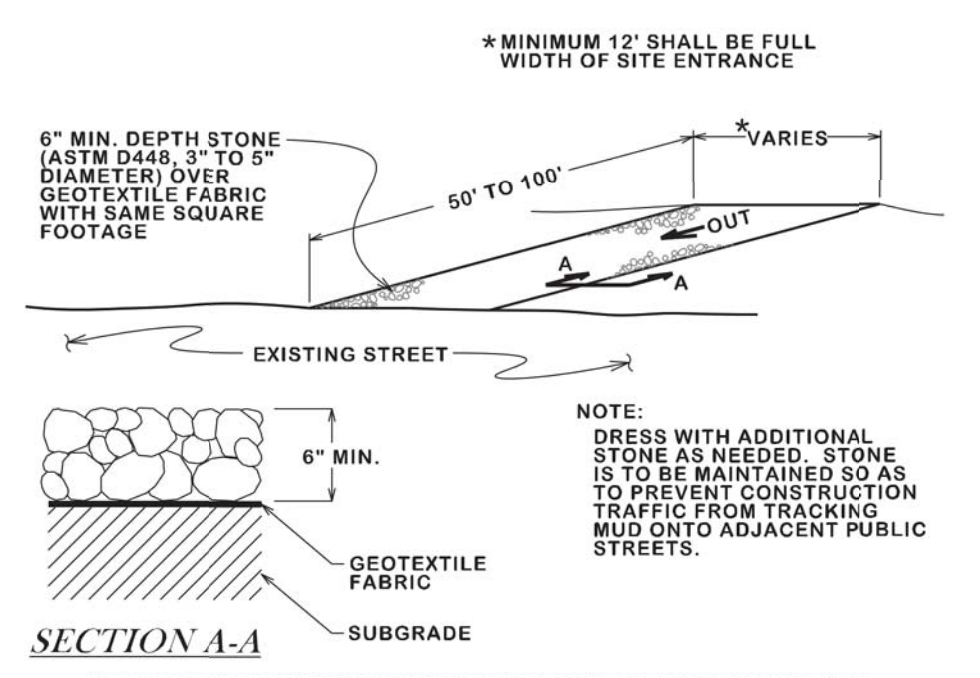
SILT FENCE ASSEMBLY
DETAIL E

GENERAL NOTES:

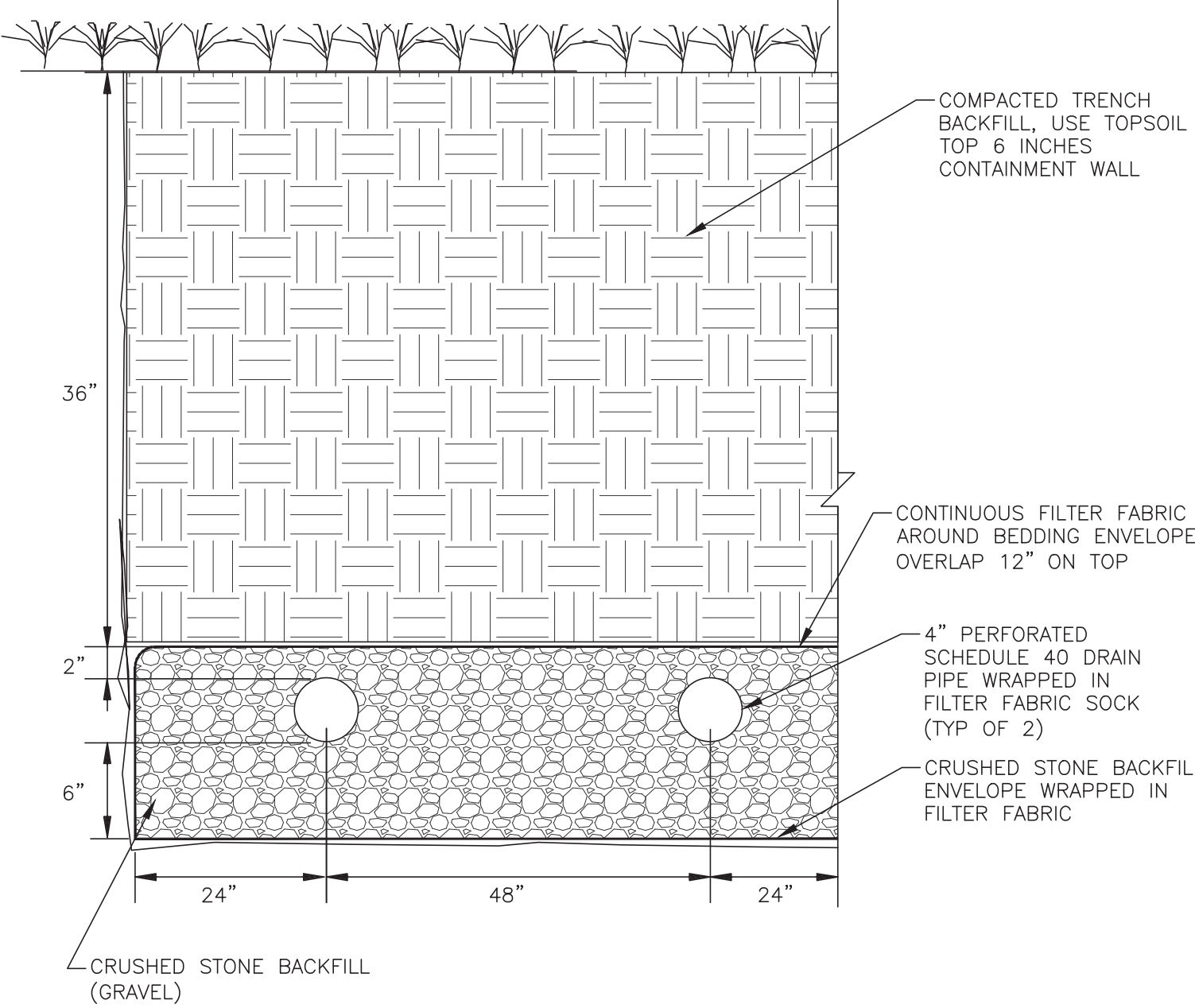
ALL AREAS WHERE EXISTING VEGETATION AND GRASS COVER HAVE BEEN BARED BY CONSTRUCTION SHALL BE ADEQUATELY BLOCK SODDED OR HYDROMULCHED AND WATERED UNTIL GROWTH IS ESTABLISHED. IN DEVELOPED AREAS WHERE GRASS IS PRESENT, BLOCK SOD WILL BE REQUIRED. BARED AREAS SHALL BE SEEDED OR SODDED WITHIN 14 CALENDAR DAYS OF LAST DISTURBANCE.

APPROVED EROSION CONTROL MEASURES MUST BE INSTALLED DURING THE ENTIRE TIME THAT EARTH HAS BEEN BARED BY CONSTRUCTION AND SHALL STAY IN PLACE UNTIL ACCEPTABLE VEGETATIVE GROWTH IS ESTABLISHED AFTER CONSTRUCTION IS COMPLETE AND THEN REMOVED BY CONTRACTOR.

ALL EROSION CONTROL MEASURES SHOULD BE CLEANED OF SILT AFTER EVERY RAIN.



CONSTRUCTION EXIT SILT CONTROL
DETAIL F



INFILTRATION TRENCH GRAVEL PIT
DETAIL G

NOTE:

POST A SIGN READING "CONCRETE WASH OUT PIT" NEXT TO THE PIT.

VERBALLY INSTRUCT THE CONCRETE TRUCK DRIVERS WHERE THE PIT IS AND TO WASH OUT THEIR TRUCKS IN THE PIT AND NO WHERE ELSE.

NO WASHING OUT OF CONCRETE TRUCKS OR WASHING OF SWEEPINGS FROM EXPOSED AGGREGATE CONCRETE INTO STORM DRAINS, OPEN DITCHES, STREETS, OR STREAMS IS ALLOWED.

EXCESS CONCRETE IS NOT ALLOWED TO BE DUMPED ON-SITE, EXCEPT IN DESIGNATED TEMPORARY CONCRETE WASHOUT PIT AREAS.

ON-SITE TEMPORARY CONCRETE WASHOUT AREAS WILL BE LOCATED AT LEAST 50 FEET FROM STORM DRAINS, OPEN DITCHES, OR WATER BODIES AS DETERMINED IN THE FIELD.

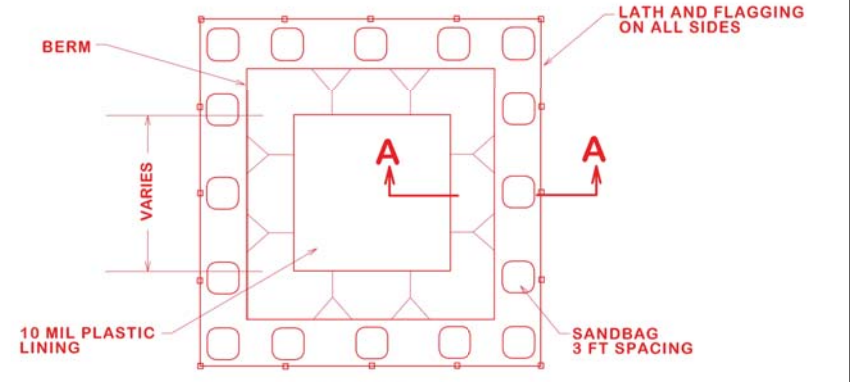
TEMPORARY CONCRETE WASHOUT FACILITIES WILL BE CONSTRUCTED AND MAINTAINED IN SUFFICIENT QUANTITY AND SIZE TO CONTAIN ALL LIQUID AND CONCRETE WASTE GENERATED BY WASHOUT OPERATIONS.

WASHOUT FACILITIES WILL BE CLEANED OUT OR REPLACED ONCE THE WASHOUT IS 75% FULL.

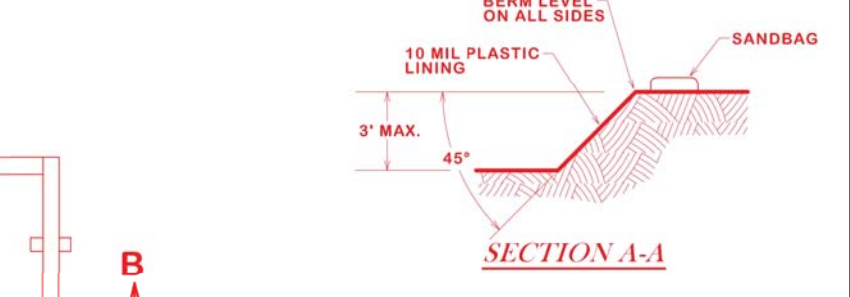
PLASTIC LINING MATERIAL WILL BE MINIMUM OF 10 MIL POLYETHYLENE SHEETING AND WILL BE FREE OF HOLES, TEARS, OR OTHER DEFECTS.

WHEN WASHOUT FACILITIES ARE NO LONGER REQUIRED FOR WORK, THE HARDENED CONCRETE WILL BE REMOVED AND DISPOSED OF OFF-SITE. MATERIALS USED TO CONSTRUCT TEMPORARY CONCRETE WASHOUT FACILITIES WILL BE REMOVED FROM THE SITE AND DISPOSED OF. BELOW GRADE PITS SHALL BE FILLED WITH CLEAN FILL MATERIAL AND COMPACTED TO IN-SITU CONDITIONS, OR AS DIRECTED BY THE PROJECT SPECIFICATIONS.

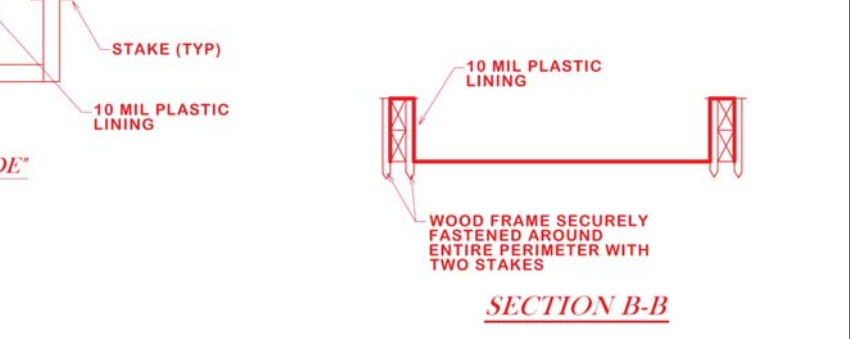
CONSTRUCT ENTRY ROAD AND BOTTOM OF WASHOUT AREA TO SUPPORT EXPECTED LOADINGS FROM TRUCK EQUIPMENT.



PLAN TYPE - "BELOW GRADE"

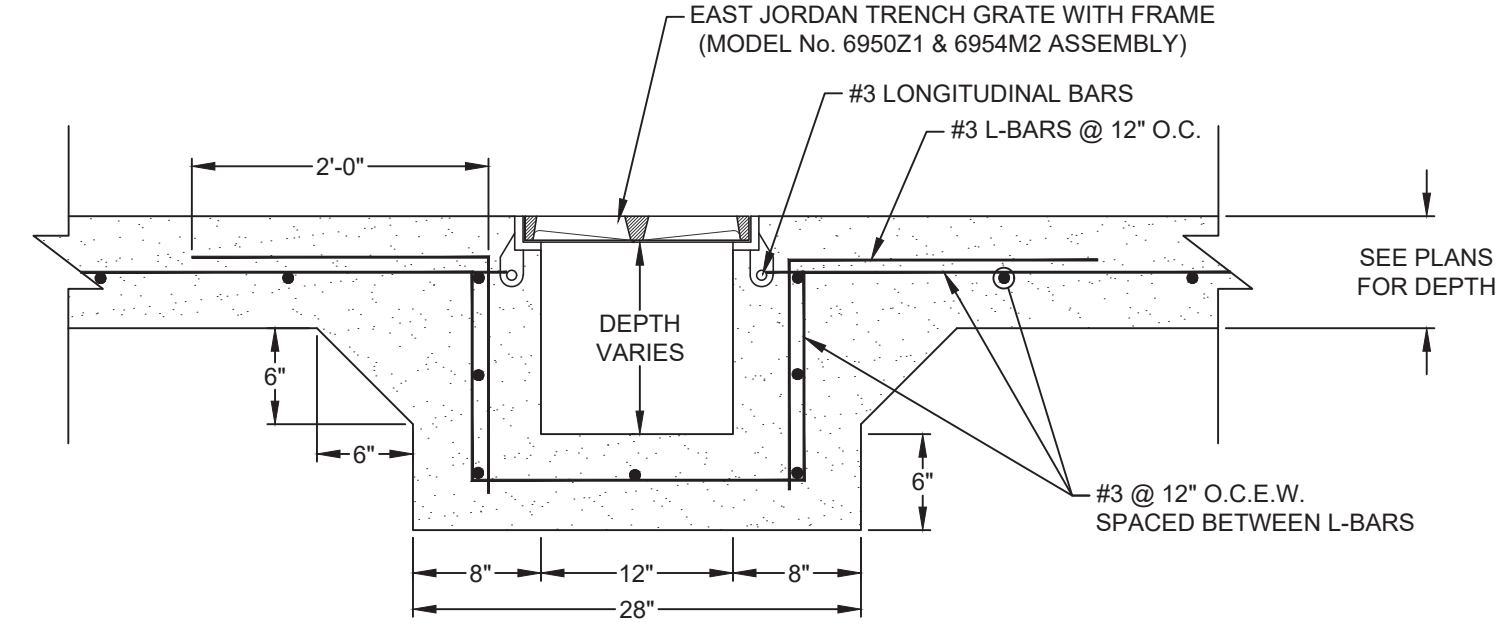


SECTION A-A



SECTION B-B

CONCRETE WASHOUT
DETAIL H



TRENCH GRATE AND ASSEMBLY
DETAIL I

DESIGNED BY: COLE CHRISTIAN, P.E.
DRAWN BY: CCC
SHEET CHK'D BY: JML
CROSS CHK'D BY: JML
APPROVED BY: CCC
DATE: FEBRUARY 2022

CDM Smith
9430 Research Blvd., Suite 1-200
Austin, TX 78759
Tel: (512) 346-1100
TBPE Firm Registration No. F-3043

CITY OF BRYAN, TEXAS
CHICK LANE ELEVATED STORAGE TANK

CIVIL STANDARD DETAILS II

PROJECT NO. 2381-266753
FILE NAME: N/A
SHEET NO. CZ-2

REV. NO.	DATE	DRWN	CHKD	REMARKS

© 2022 CDM SMITH ALL RIGHTS RESERVED. REUSE OF DOCUMENTS: THESE DOCUMENTS AND DESIGNS PROVIDED BY PROFESSIONAL SERVICE, INCORPORATED HEREIN, ARE THE PROPERTY OF CDM SMITH AND ARE NOT TO BE USED, IN WHOLE OR PART, FOR ANY OTHER PROJECT WITHOUT THE WRITTEN AUTHORIZATION OF CDM SMITH.